

Automation for Industrial Applications

Company Profile

GfPA is a Swiss based company operating as control system integrators since 1991.

Our clients include leading companies in the fields of power generation, waste incineration and oil & gas industry from national, european and international markets.

Products

- Supply of complete turnkey control systems
- Application Engineering
- Engineering support for EPC contractors and operators
- Consulting
- Assessment and Validation of installed systems
- Safety Management

Product Platforms

- ABB 800xA Extended Automation
- ABB Advant OCS:
AC450, AC160, OS500, IMS
- ABB Procontrol:
P14, P13

Services

- System Analysis
- Concepts
- Specifications
- Detail Planning
- Simulation and Testing
- Factory Acceptance Testing
- Commissioning
- Site Acceptance
- Training
- Maintenance
- Customer Support

Certifications

- Functional Safety Expert CFSE
acc. IEC61508,61511
- ISO-certified acc. ISO 9001 :2008
- Authorized Value Provider for ABB 800xA



Customers



FLUGHAFENZÜRICH



Reference Projects

Control System Replacement for District Heating Station, Switzerland

GfPA supplied the complete replacement for an existing SIEMENS control system for a district heating station and process steam supply.

The new system was integrated into the existing ABB 800xA control system without interrupting the productive system.

GfPA realised a SIL2 certified protection system combined with conventional controls in AC800M hardware.

Control System for a 460MW Combined Cycle Power Station, Vietnam

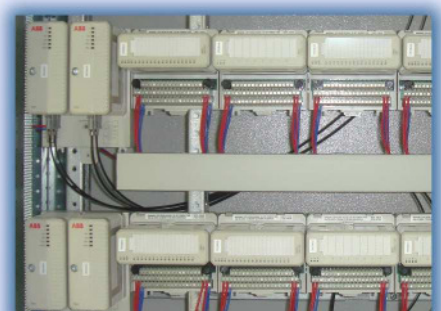
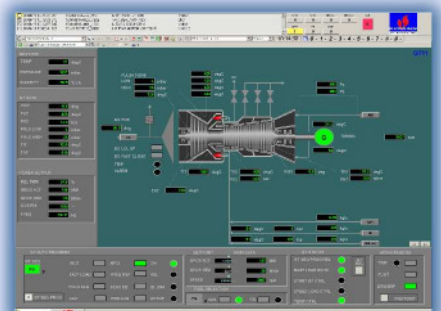
GfPA supplied the complete DCS for a combined cycle power plant in Vietnam.

The ABB 800xA control system design used conventional IO's and tight integration of the Alstom turbines with ABB Advant AC450 / AC160 turbine controllers; in addition to communication interfaces to switchyards and sub-systems.

Control System for a 5x45MW Gas Turbine Power Station, Kuwait

GfPA supplied the complete DCS for a power plant in Kuwait.

The ABB 800xA control system design used local and remote IO's combined with communication interfaces to the switchyard and the General Electric gas turbines.



Authorized
value
provider

